



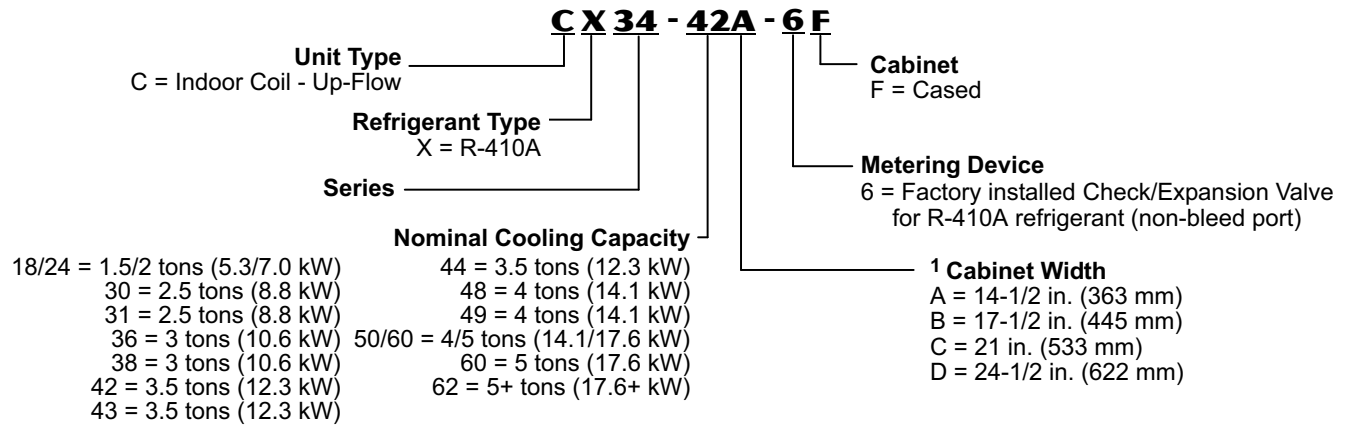
Up-Flow - Cased - R-410A

Bulletin No. 210322
 July 2007
 Supersedes April 2006



1.5 to 5 Tons

MODEL NUMBER IDENTIFICATION



¹ Furnaces with the same letter designation will physically match the indoor coil.

FEATURES

CONTENTS

Air Resistance Page 4
 Dimensions Page 5-6
 Features Pages 1-2
 Model Number Identification Page 1
 Specifications Pages 2-3

EQUIPMENT WARRANTY

All covered components - limited warranty for **five years** in residential applications, one year warranty in non-residential applications.
 Refer to Lennox Equipment Limited Warranty certificate included with equipment for details.

APPLICATIONS

Factory installed R-410A, check/expansion valve.
 See bulletins in section Air Conditioners for indoor coil applications and cooling capacities.
 See bulletins in section Heat Pump Outdoor Units for indoor coil applications and cooling and heating capacities.
 See FM21® bulletin (section - Controls) for more information about heat pump systems.

FEATURES

FULLY TESTED

Tested with matching air conditioners and heat pump units.

Rated in accordance with ARI Standard 210/240-94 conditions and DOE test procedures.

Air resistance tests from Lennox Laboratory air test chamber.

CABINET

Cabinets insulated with thick fiberglass insulation.

Constructed of pre-painted heavy gauge steel.

Flanges provided in outlet opening of cabinet for ease of plenum connection.

Engaging holes furnished on cabinet for alignment with furnace.

Removable panels provide access to coil.

See dimension drawing.

Furnace Match-Up

Coils exactly match corresponding Lennox furnaces with same letter designation in model number. No adaptor required.

Engaging holes furnished on cabinet for alignment.

REFRIGERATION SYSTEM

Coil Construction

Durable copper tubing.

Ripple-edged aluminum fins.

Lanced fins provide maximum exposure of fin surface to air stream.

Rifled tubing provides superior refrigerant heat transfer.

Twin coil construction assembled in a "A" configuration for large surface area.

Non-corrosive, UV-resistant polymer drain pan with dual fpt drain connections.

Sweat connections on both liquid and suction lines.

High pressure testing ensures leakproof construction.

Check/Expansion Valve

All models have a factory-installed, internal check/expansion valve.

For use with R-410A systems.

Wide range valve.

Chatleff style fitting.

Check/expansion valves are externally-equalized, non-bleed port type.



SPECIFICATIONS

1.5 TO 2 TON

General Data		Model No.	CX34-18/24A-6F	CX34-18/24B-6F	CX34-18/24C-6F	CX34-19A-6F	CX34-25A-6F
Nominal size - tons			1.5/2	1.5/2	1.5/2	1.5	2
Line Connections	Suction/Vapor o.d. - in. (mm) sweat		3/4 (19)	3/4 (19)	3/4 (19)	3/4 (19)	3/4 (19)
	Liquid o.d. - in. (mm) sweat		3/8 (9.5)	3/8 (9.5)	3/8 (9.5)	3/8 (9.5)	3/8 (9.5)
	Condensate drain (fpt) - in. (mm)		(2) 3/4 (19)	(2) 3/4 (19)	(2) 3/4 (19)	(2) 3/4 (19)	(2) 3/4 (19)
Indoor Coil	Net face area - sq. ft. (m ²)		3.11 (0.29)	3.11 (0.29)	3.11 (0.29)	3.11 (0.29)	3.55 (0.33)
	Tube diameter - in. (mm)		3/8 (9.5)	3/8 (9.5)	3/8 (9.5)	3/8 (9.5)	3/8 (9.5)
	(Number of rows) Fins per inch (m)		(2) 18 (709)	(2) 18 (709)	(2) 18 (709)	(2) 12 (473)	(3) 14 (552)
Matching Lennox Furnace	Cabinet Width Designation		A	B	C	A	A
	Coil & Furnace Cabinet Width - in.		14-1/2	17-1/2	21	14-1/2	14-1/2
	mm		368	445	533	368	368
Shipping Data	lbs. (kg) - 1 package		31 (14)	31 (14)	41 (19)	35 (16)	39 (18)

SPECIFICATIONS

2 TO 2.5 TON

General Data		Model No.	CX34-25B-6F	CX34-30A-6F	CX34-30B-6F	CX34-30C-6F	CX34-31A-6F	CX34-31B-6F
Nominal size - tons (kW)			2	2.5	2.5	2.5	2.5	2.5
Line Connections	Suction/Vapor o.d. - in. (mm) sweat		3/4 (19)	3/4 (19)	3/4 (19)	3/4 (19)	3/4 (19)	3/4 (19)
	Liquid o.d. - in. (mm) sweat		3/8 (9.5)	3/8 (9.5)	3/8 (9.5)	3/8 (9.5)	3/8 (9.5)	3/8 (9.5)
	Condensate drain (fpt) - in. (mm)		(2) 3/4 (19)	(2) 3/4 (19)	(2) 3/4 (19)	(2) 3/4 (19)	(2) 3/4 (19)	(2) 3/4 (19)
Indoor Coil	Net face area - sq. ft. (m ²)		3.55 (0.33)	4.0 (0.37)	4.0 (0.37)	4.0 (0.37)	4.44 (0.41)	4.44 (0.41)
	Tube diameter - in. (mm)		3/8 (9.5)	3/8 (9.5)	3/8 (9.5)	3/8 (9.5)	3/8 (9.5)	3/8 (9.5)
	(Number of rows) Fins per inch (m)		(3) 14 (552)	(2) 18 (709)	(2) 18 (709)	(2) 18 (709)	(3)13 (512)	(3)13 (512)
Matching Lennox Furnace	Cabinet Width Designation		B	A	B	C	A	B
	Coil & Furnace Cabinet Width - in.		17-1/2	14-1/2	17-1/2	21	14-1/2	17-1/2
	mm		445	368	445	533	368	445
Shipping Data	lbs. (kg) - 1 package		41 (19)	37 (17)	40 (18)	48 (22)	47 (21)	49 (22)

SPECIFICATIONS		3 TON				
General Data	Model No.	CX34-36A-6F	CX34-36B-6F	CX34-36C-6F	CX34-38A-6F	CX34-38B-6F
	Nominal size - tons (kW)	3	3	3	3	3
Line Connections	Suction/Vapor o.d. - in. (mm) sweat	3/4 (19)	3/4 (19)	3/4 (19)	3/4 (19)	3/4 (19)
	Liquid o.d. - in. (mm) sweat	3/8 (9.5)	3/8 (9.5)	3/8 (9.5)	3/8 (9.5)	3/8 (9.5)
	Condensate drain (fpt) - in. (mm)	(2) 3/4 (19)	(2) 3/4 (19)	(2) 3/4 (19)	(2) 3/4 (19)	(2) 3/4 (19)
Indoor Coil	Net face area - sq. ft. (m ²)	4.89 (0.45)	4.89 (0.45)	4.89 (0.45)	4.89 (0.45)	4.89 (0.45)
	Tube diameter - in. (mm)	3/8 (9.5)	3/8 (9.5)	3/8 (9.5)	3/8 (9.5)	3/8 (9.5)
	(Number of rows) Fins per inch (m)	(2) 18 (709)	(2) 18 (709)	(2) 18 (709)	(3) 14 (552)	(3) 14 (552)
Matching Lennox Furnace	Cabinet Width Designation	A	B	C	A	B
	Coil & Furnace Cabinet Width - in.	14-1/2	17-1/2	21	14-1/2	17-1/2
	mm	368	445	533	368	445
Shipping Data	lbs. (kg) - 1 package	45 (20)	46 (21)	50 (23)	49 (22)	51 (23)

SPECIFICATIONS		3.5 TO 4 TON				
General Data	Model No.	CX34-42B-6F	CX34-43B-6F	CX34-43C-6F	CX34-44/48B-6F	CX34-44/48C-6F
	Nominal size - tons (kW)	3.5	3.5	3.5/4	3.5/4	3.5/4
Line Connections	Suction/Vapor o.d. - in. (mm) sweat	7/8 (22.2)	7/8 (22.2)	7/8 (22.2)	7/8 (22.2)	7/8 (22.2)
	Liquid o.d. - in. (mm) sweat	3/8 (9.5)	3/8 (9.5)	3/8 (9.5)	3/8 (9.5)	3/8 (9.5)
	Condensate drain (fpt) - in. (mm)	(2) 3/4 (19)	(2) 3/4 (19)	(2) 3/4 (19)	(2) 3/4 (19)	(2) 3/4 (19)
Indoor Coil	Net face area - sq. ft. (m ²)	4.89 (0.45)	5.77 (0.54)	5.77 (0.54)	4.89 (0.45)	4.89 (0.45)
	Tube diameter - in. (mm)	3/8 (9.5)	3/8 (9.5)	3/8 (9.5)	3/8 (9.5)	3/8 (9.5)
	(Number of rows) Fins per inch (m)	(2) 18 (709)	(3) 13 (512)	(3) 13 (512)	(3) 12 (472)	(3) 12 (472)
Matching Lennox Furnace	Cabinet Width Designation	B	B	C	B	C
	Coil & Furnace Cabinet Width - in.	17-1/2	17-1/2	21	17-1/2	21
	mm	445	445	533	445	533
Shipping Data	lbs. (kg) - 1 package	47 (21)	60 (27)	63 (29)	52 (24)	55 (23)

SPECIFICATIONS		4 TO 5 TON				
General Data	Model No.	CX34-49C-6F	CX34-50/60C-6F	CX34-60D-6F	CX34-62C-6F	CX34-62D-6F
	Nominal size - tons (kW)	4	4/5	5	5	5
Line Connections	Suction/Vapor o.d. - in. (mm) sweat	7/8 (22.2)	7/8 (22.2)	7/8 (22.2)	7/8 (22.2)	7/8 (22.2)
	Liquid o.d. - in. (mm) sweat	3/8 (9.5)	3/8 (9.5)	3/8 (9.5)	3/8 (9.5)	3/8 (9.5)
	Condensate drain (fpt) - in. (mm)	(2) 3/4 (19)	(2) 3/4 (19)	(2) 3/4 (19)	(2) 3/4 (19)	(2) 3/4 (19)
Indoor Coil	Net face area - sq. ft. (m ²)	7.0 (0.65)	5.78 (0.54)	6.50 (0.60)	7.50 (0.70)	7.58 (0.70)
	Tube diameter - in. (mm)	3/8 (9.5)	3/8 (9.5)	3/8 (9.5)	3/8 (9.5)	3/8 (9.5)
	(Number of rows) Fins per inch (m)	(3) 12 (472)	(3) 12 (472)	(3) 12 (472)	(3) 16 (630)	(3) 14 (552)
Matching Lennox Furnace	Cabinet Width Designation	C	C	D	C	D
	Coil & Furnace Cabinet Width - in.	21	21	24-1/2	21	24-1/2
	mm	533	533	622	533	622
Shipping Data	lbs. (kg) - 1 package	72 (33)	66 (30)	66 (30)	77 (35)	76 (34)

AIR RESISTANCE

Model No.	Air Volume		Total Air Resistance			
	cfm	L/s	Dry Coil		Wet Coil	
			in. w.g.	Pa	in. w.g.	Pa
CX34-18/24A-6F	400	190	0.06	15	0.08	20
CX34-18/24B-6F	600	285	0.11	27	0.17	42
CX34-18/24C-6F	800	380	0.18	45	0.25	62
	1000	470	0.27	67	0.39	97
	1200	565	0.37	92	0.52	129
CX34-19A-6F	200	90	0.01	2	0.04	10
	400	190	0.03	7	0.05	12
	600	285	0.08	20	0.09	22
	800	380	0.13	32	0.16	40
	1000	470	0.20	50	0.24	60
CX34-25A-6F	400	190	0.05	12	0.05	12
	600	280	0.09	22	0.10	25
	800	380	0.16	40	0.18	45
	1000	470	0.23	57	0.26	65
	1200	570	0.32	80	0.36	90
CX34-25B-6F	400	190	0.03	7	0.04	10
	600	285	0.07	17	0.09	22
	800	380	0.11	27	0.15	37
	1000	470	0.17	42	0.22	55
	1200	565	0.23	57	0.31	77
CX34-30A-6F	600	285	0.09	22	0.12	30
CX34-30B-6F	800	380	0.14	35	0.21	52
CX34-30C-6F	1000	470	0.22	55	0.30	75
	1200	565	0.30	75	0.43	107
	1400	660	0.40	99	0.55	137
CX34-31A-6F	600	285	0.07	17	0.08	20
	800	380	0.12	30	0.13	32
	1000	470	0.18	45	0.20	50
	1200	565	0.26	65	0.28	70
	1400	660	0.34	85	0.37	92
CX34-31B-6F	600	285	0.06	15	0.06	15
	800	380	0.09	22	0.11	27
	1000	470	0.13	32	0.16	40
	1200	565	0.19	47	0.23	57
	1400	660	0.25	62	0.31	77
CX34-36A-6F	800	380	0.13	32	0.14	35
	1000	470	0.19	47	0.21	52
	1200	565	0.27	67	0.30	75
	1400	660	0.34	85	0.39	97
	1600	760	0.45	112	0.51	127
CX34-36B-6F	800	380	0.08	20	0.11	27
CX34-36C-6F	1000	470	0.13	32	0.16	40
CX34-38B-6F	1200	565	0.17	42	0.21	52
CX34-44/48B-6F	1400	660	0.22	55	0.28	70
	1600	760	0.29	72	0.34	85

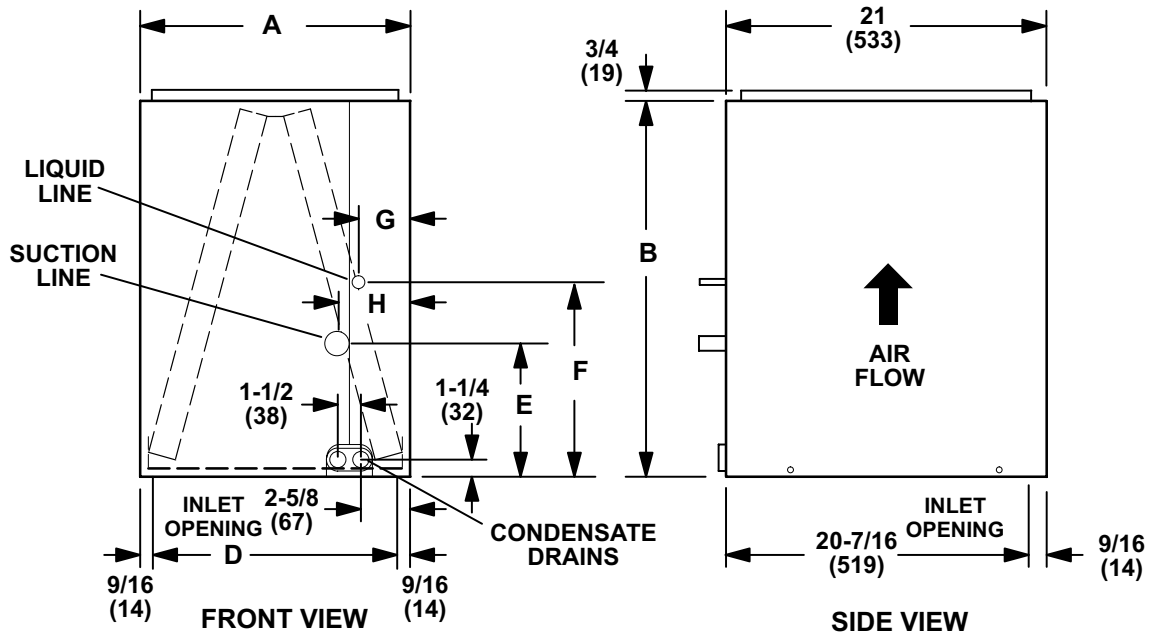
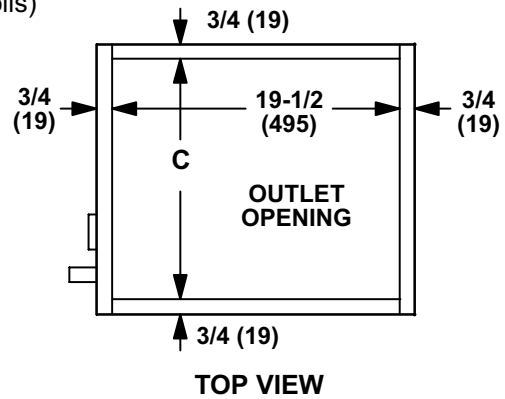
Model No.	Air Volume		Total Air Resistance			
	cfm	L/s	Dry Coil		Wet Coil	
			in. w.g.	Pa	in. w.g.	Pa
CX34-38A-6F	800	380	0.13	32	0.14	35
	1000	470	0.19	47	0.21	52
	1200	565	0.27	67	0.30	75
	1400	660	0.34	85	0.39	97
	1600	755	0.45	112	0.51	127
CX34-42B-6F	1000	470	0.13	32	0.16	40
	1200	565	0.17	42	0.21	52
	1400	660	0.22	55	0.28	70
	1600	755	0.29	72	0.34	85
	1800	850	0.34	85	0.42	104
CX34-43B-6F	1000	470	0.13	32	0.13	32
	1200	565	0.18	45	0.18	45
	1400	660	0.23	57	0.24	60
	1600	755	0.30	75	0.31	77
	1800	850	0.37	92	0.40	100
CX34-43C-6F	1000	470	0.07	17	0.09	22
	1200	565	0.10	25	0.12	30
	1400	660	0.13	32	0.16	40
	1600	755	0.16	40	0.20	50
	1800	850	0.20	50	0.24	60
CX34-44/48C-6F	1200	565	0.13	32	0.17	42
CX34-50/60C-6F	1400	660	0.18	45	0.23	57
	1600	755	0.23	57	0.29	72
	1800	850	0.28	70	0.37	92
	2000	945	0.34	85	0.43	107
CX34-49C-6F	1200	565	0.08	20	0.12	30
	1400	660	0.13	32	0.17	42
	1600	755	0.17	42	0.22	55
	1800	850	0.22	55	0.28	70
	2000	945	0.28	70	0.35	87
CX34-60D-6F	1400	660	0.11	27	0.15	37
CX34-62D-6F	1600	755	0.14	35	0.18	45
	1800	850	0.17	42	0.21	52
	2000	945	0.21	52	0.27	67
	2200	1040	0.25	62	0.32	80
	2400	1135	0.30	75	0.37	92
CX34-62C-6F	1400	660	0.15	37	0.19	47
	1600	755	0.19	47	0.23	57
	1800	850	0.24	60	0.28	70
	2000	945	0.29	72	0.34	85
	2200	1040	0.33	82	0.40	100
	2400	1135	0.39	97	0.46	115

DIMENSIONS - INCHES (MM)

CX34-18/24-6F thru CX34-44/48C-6F, CX34-50/60C-6F thru CX34-60D-6F and CX34-62D-6F

(NOTE - See next page for CX34-49C-6F and CX34-62C-6F Coils)

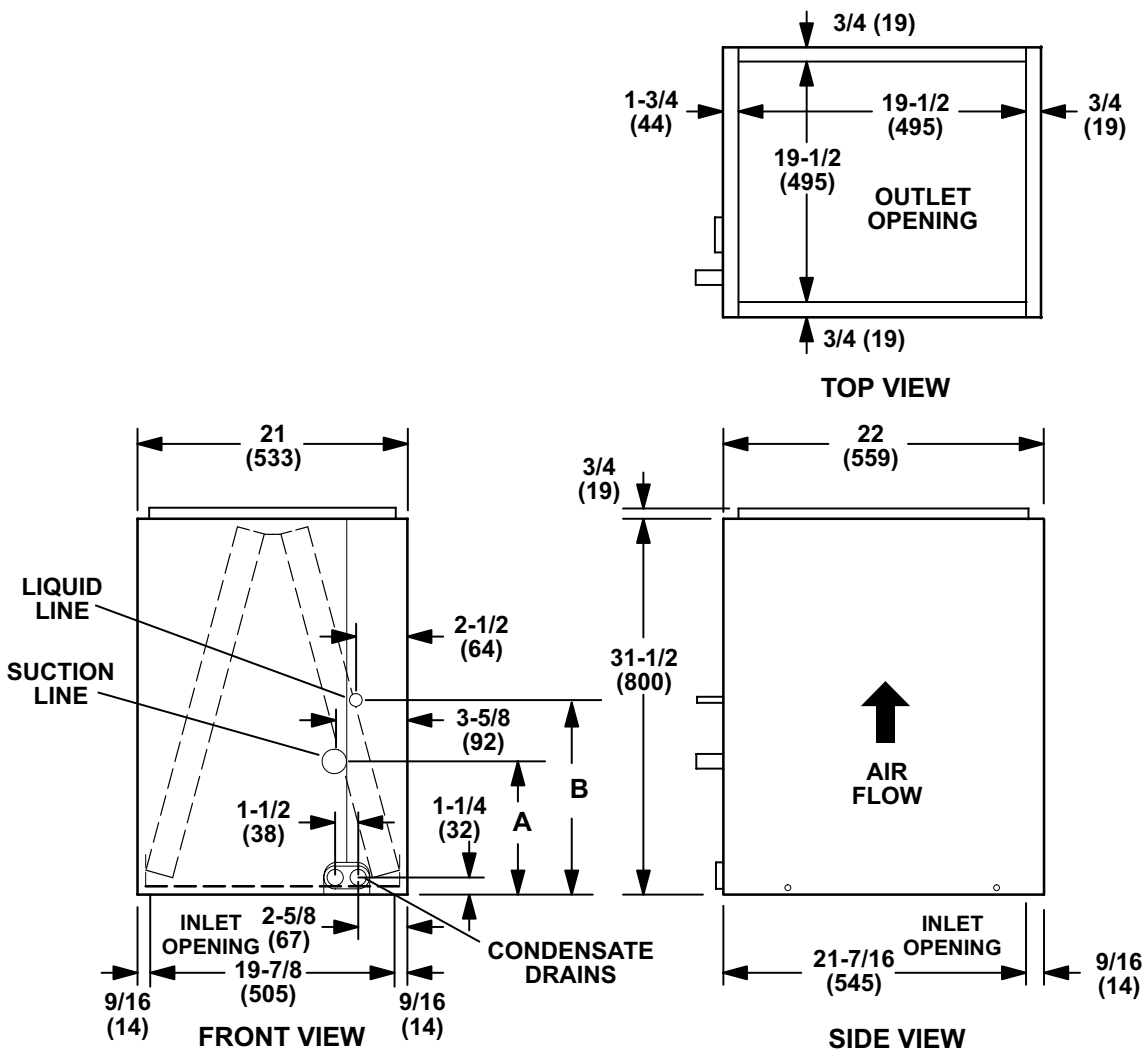
NOTE - CX34-60D and CX34-62D coil are positioned in cabinet with coil face running left to right, all other coil sizes are positioned like drawing.



Model No.	A		B		C		D		E		F		G		H	
	in.	mm	in.	mm	in.	mm	in.	mm	in.	mm	in.	mm	in.	mm	in.	mm
CX34-18/24A-6F	14-1/2	368	16-1/2	419	13	330	13-3/8	340	10-1/4	260	13-1/4	337	2-3/4	70	3-7/8	98
CX34-18/24B-6F	17-1/2	445	16-1/2	419	16	406	16-3/8	416	10-1/4	260	13-1/4	337	3	76	4-1/8	105
CX34-18/24C-6F	21	533	16-1/2	419	19-1/2	495	19-7/8	505	10-1/4	260	13-1/4	337	3	76	4-1/8	105
CX34-19A-6F	14-1/2	368	16-1/2	419	13	330	13-3/8	340	10-7/8	276	13-7/8	353	3	76	3-7/8	98
CX34-25A-6F	14-1/2	368	18-1/2	470	13	330	13-3/8	340	12-7/8	327	15-7/8	403	3	76	3-7/8	98
CX34-25B-6F	17-1/2	445	18-1/2	470	16	406	16-3/8	416	12-7/8	327	15-7/8	403	3-1/4	83	4-1/8	105
CX34-30A-6F	14-1/2	368	20-1/2	521	13	330	13-3/8	340	10-1/4	260	13-1/4	337	2-3/4	70	3-7/8	98
CX34-30B-6F	17-1/2	445	20-1/2	521	16	406	16-3/8	416	12-1/4	311	15-1/4	387	3	76	4-1/8	105
CX34-30C-6F	21	533	20-1/2	521	19-1/2	495	19-7/8	505	12-1/4	311	15-1/4	387	3	76	4-1/8	105
CX34-31A-6F	14-1/2	368	22-1/2	572	13	330	13-3/8	340	12-3/8	314	15-3/8	391	1-1/2	38	2-3/8	60
CX34-31B-6F	17-1/2	445	22-1/2	572	16	406	16-3/8	416	12-3/8	314	15-3/8	391	3-1/4	83	4-1/8	105
CX34-36A-6F	14-1/2	368	24-1/2	622	13	330	13-3/8	340	10-1/4	260	13-1/4	337	2-3/4	70	3-7/8	98
CX34-36B-6F	17-1/2	445	24-1/2	622	16	406	16-3/8	416	10-1/4	260	13-1/4	337	3	76	4-1/8	105
CX34-36C-6F	21	533	24-1/2	622	19-1/2	495	19-7/8	505	10-1/4	260	13-1/4	337	4-3/4	121	3-5/8	92
CX34-38A-6F	14-1/2	368	24-1/2	622	13	330	13-3/8	340	12-3/4	324	15-3/4	400	2-3/4	70	3-7/8	98
CX34-38B-6F	17-1/2	445	24-1/2	622	16	406	16-3/8	416	12-3/4	324	15-3/4	400	2-3/4	70	3-7/8	98
CX34-42B-6F	17-1/2	445	24-1/2	622	16	406	16-3/8	416	10-1/4	260	13-1/4	337	3	76	4-1/8	105
CX34-43B-6F	17-1/2	445	27-1/2	699	16	406	16-3/8	416	16-3/4	425	19-3/4	502	3-1/4	83	4-1/8	105
CX34-43C-6F	21	533	27-1/2	699	19-1/2	495	19-7/8	505	16-3/4	425	19-3/4	502	2-3/4	70	3-5/8	92
CX34-44/48B-6F	17-1/2	445	24-1/2	622	16	406	16-3/8	416	9-3/4	248	12-3/4	324	3	76	4-1/8	105
CX34-44/48C-6F	21	533	24-1/2	622	19-1/2	495	19-7/8	505	12-3/4	324	15-3/4	400	4-1/4	108	5-3/8	137
CX34-50/60C-6F	21	533	27-1/2	699	19-1/2	495	19-7/8	505	16-1/2	419	19-1/2	495	2-1/2	64	3-5/8	92
CX34-60D-6F	24-1/2	622	25-1/2	648	23	584	23-3/8	594	11-7/8	302	14-7/8	518	1-5/8	41	2-3/4	70
CX34-62D-6F	24-1/2	622	29-1/2	749	23	584	23-3/8	594	18-7/8	479	21-7/8	556	1-5/8	41	2-3/4	70

DIMENSIONS - INCHES (MM)

CX34-49C-6F and CX34-62C-6F



Model No.	A		B	
	in.	mm	in.	mm
CX34-49C-6F	15-7/8	403	18-3/4	476
CX34-62C-6F	18-7/8	479	21-7/8	556

REVISIONS

Sections	Description of Change
Dimensions	<p>Cased dimensions updated:</p> <p>19A "B" dimension (height) changed to 16-1/2 in.</p> <p>25A and 25B "B" dimension (height) changed to 18-1/2 in.</p> <p>31A and 31B "B" dimension (height) changed to 22-1/2 in.</p> <p>43B and 43C "B" dimension (height) changed to 27-1/2 in.</p> <p>62C height changed to 31-1/2 in.</p>



Visit us at www.lennox.com
For the latest technical information, www.lennoxdagenet.com
Contact us at 1-800-4-LENNOX

NOTE - Due to Lennox' ongoing commitment to quality, Specifications, Ratings and Dimensions subject to change without notice and without incurring liability.
Improper installation, adjustment, alteration, service or maintenance can cause property damage or personal injury.
Installation and service must be performed by a qualified installer and servicing agency.

©2007 Lennox Industries Inc.