

GAS FURNACES



SUPER QUIET 80 UPFLOW/ HORIZONTAL GAS FURNACES 50 Hz

The Rheem Super Quiet 80 line of upflow/horizontal gas furnaces are designed for utility rooms, closets, alcoves, or attics. **Because of the Super Quiet 80's low-profile 34 inch [864 mm] height, the upflow model can also be used to satisfy most applications that traditionally call for a horizontal furnace.**

The design is certified by CSA International.

Features

- Innovative combustion design results in reliable, efficient operation at sound levels which provide distinct competitive advantage.
- Patented Heat Exchanger, constructed of both stainless and aluminized steel for the maximum in corrosion resistance.
- Low profile "34 inch" design is lighter and easier to handle, and leaves room for optional equipment.
- Convertible from upflow to horizontal left or right without field conversion.
- Left or right side gas and electric inlet connections with quick, simple change.
- Robust and reliable direct spark ignition utilizing remote sense and an integrated board with humidifier and electrsonic air cleaner hookups.
- Insulated blower compartment helps to reduce jacket loss and noise.
- Pre-paint galvanized steel cabinet.
- Molded permanent filter.
- Grab-holes in doors to aid in easy door removal and replacement.

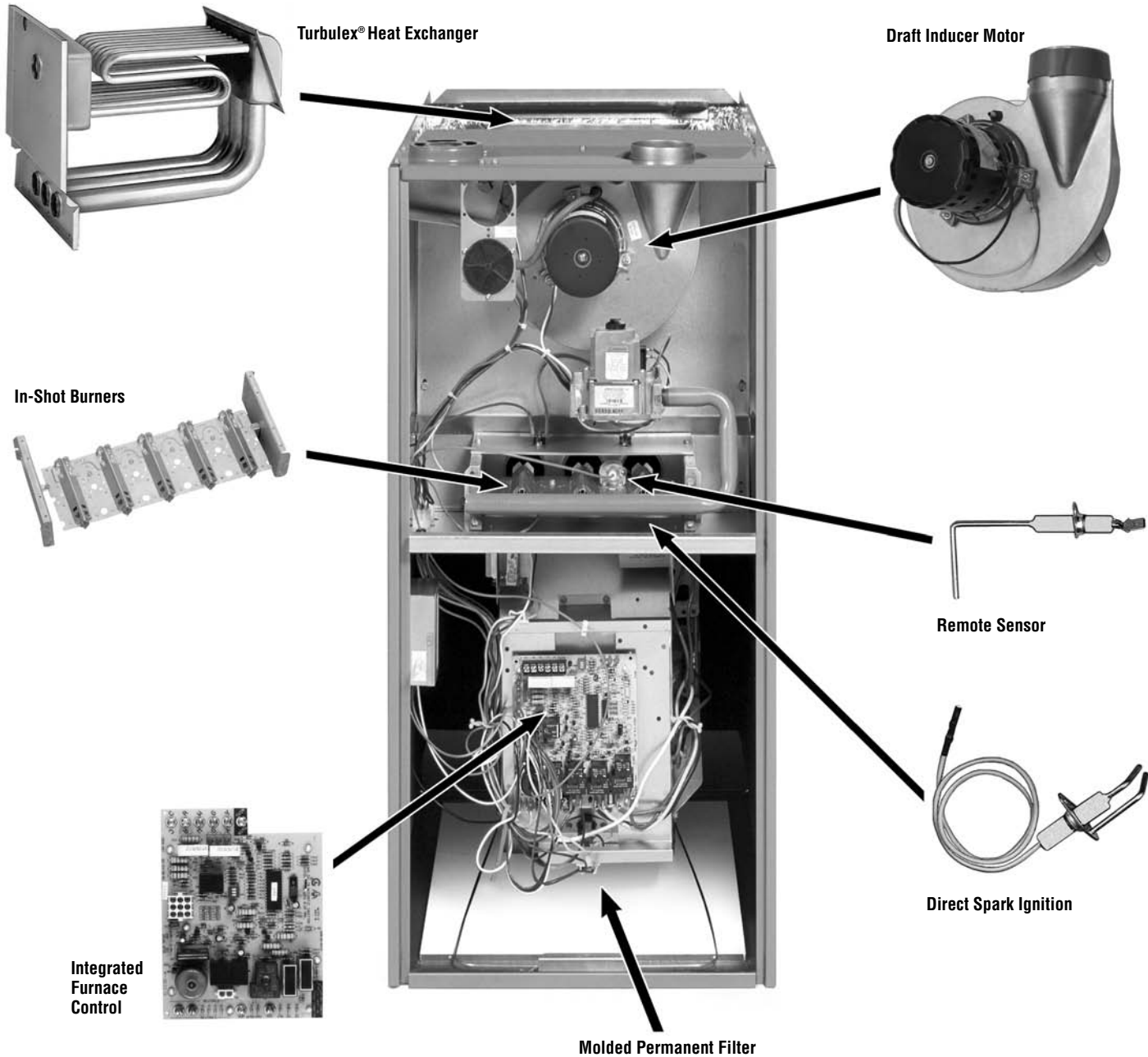


SGPN- SERIES
Models with Input Rates from
45,000 to 135,000 BTU/HR
[13 to 40 kW]





SUPER QUIET 80 UPFLOW/HORIZONTAL GAS FURNACE 50 Hz



Turbulux® Heat Exchanger

Draft Inducer Motor

In-Shot Burners

Remote Sensor

Integrated Furnace Control

Direct Spark Ignition

Molded Permanent Filter

STANDARD EQUIPMENT

Completely assembled and wired; induced draft; pressure switch; redundant main gas control; blower compartment door safety switch; solid state time on/time off blower control; limit control; transformer; direct drive multi-speed blower motor. Furnaces are equipped with cooling/heating relay and transformer (40VA) ready for air conditioning applications. (Please note: a thermostat is not included as standard equipment.) Flame sensor diagnostics; **spark only twinning options**, fused transformer (secondary), **3rd speed fan option for continuous fan**; **common heat/cool terminal for spark**.

OPTIONAL EQUIPMENT

Side filter frame assembly. Return air cabinet for all sizes.

NOTE: Furnace is not listed for use with fuels other than natural or L.P. (propane) gas.

The complete terms of limited and other warranties are available at our sales office, or through local installer.

All models can be converted by a qualified Rheem distributor or local service dealer to use L.P. (propane) gas without changing burners. Factory approved kits must be used to convert from natural to L.P. (propane) gas and may be ordered as optional accessories from a Rheem parts distributor.

For L.P. (propane) operation, refer to Conversion Kit Index Form No. 92-21519-30 for International models.

WARNING
THIS FURNACE IS NOT APPROVED
OR RECOMMENDED
FOR USE IN MOBILE HOMES

BEFORE PURCHASING THIS APPLIANCE, READ IMPORTANT ENERGY COST AND EFFICIENCY INFORMATION AVAILABLE FROM YOUR RETAILER.

PHYSICAL DATA AND SPECIFICATIONS

220/240V 50 Hz International—Direct Spark Models

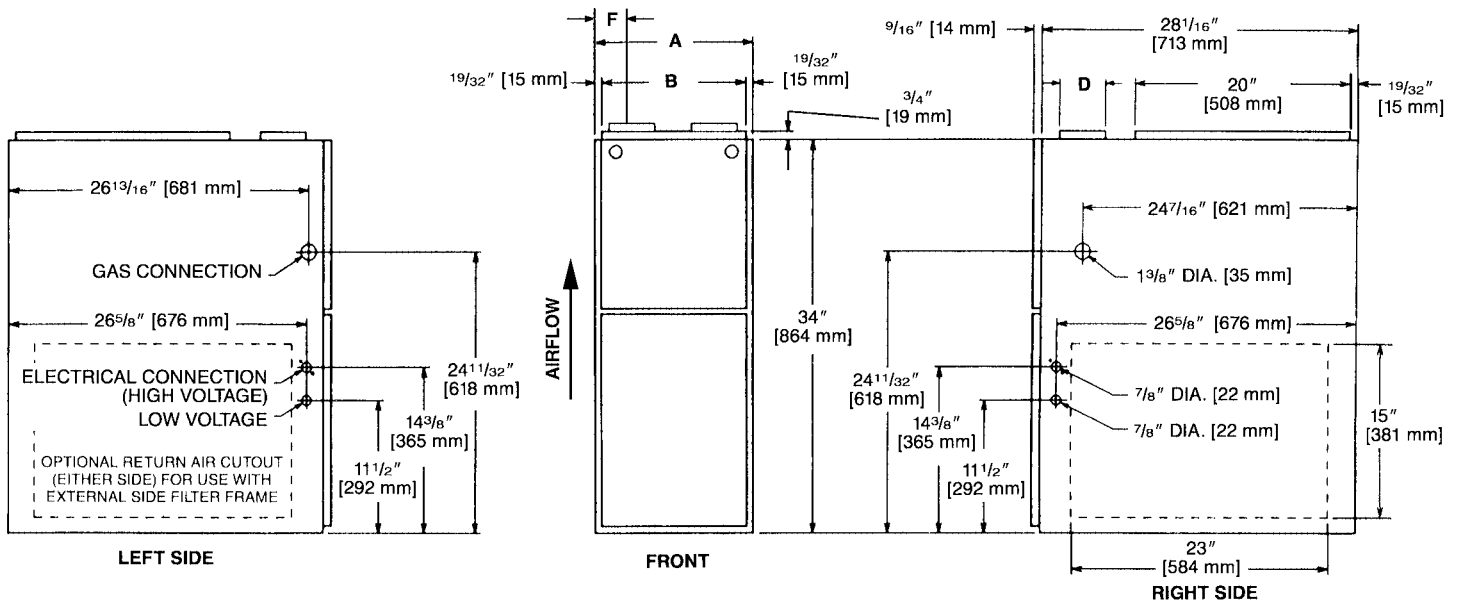
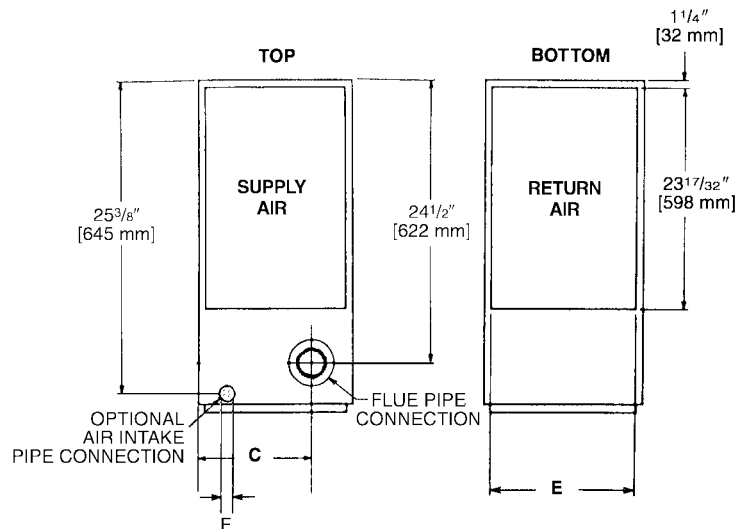
		220/240V 50 Hz International Direct Spark Models						
MODEL NUMBERS SGPN- SERIES		04EAUEY	06EAMEY	06EAMGY	09EAMEY	09EBRJY	11EARJY	13EARJY
Input-BTU/Hr [kW]		45,000 [13]	67,500 [20]	67,500 [20]	90,000 [26]	90,000 [26]	112,500 [33]	135,000 [40]
Heat Ext. Static Pressure (In.) [kPa]		.10 [.025]	.12 [.03]	.12 [.03]	.15 [.037]	.15 [.037]	.20 [.05]	.20 [.05]
Blower Size (D x W) [mm]		11 x 6 [279 x 152]	11 x 7 [279 x 178]	11 x 7 [279 x 178]	11 x 7 [279 x 178]	11 x 10 [279 x 254]	11 x 10 [279 x 254]	11 x 10 [279 x 254]
Motor H.P.—Speed— PSC Type [W]		1/2-3-PSC [373]	1/2-3-PSC [373]	3/4-3-PSC [560]	1/2-3-PSC [373]	3/4-3-PSC [560]	3/4-3-PSC [560]	3/4-3-PSC [560]
Motor Full Load Amps		3.7	3.7	6.4	3.7	6.4	6.4	6.4
Heating Speed		Low	Med	Low	Low	Low	Low	Low
Cooling Speed		High	High	High	High	High	High	High
Cooling CFM @ .5" E.S.P. (Nominal) [L/s]		1200 [566]	1200 [566]	1600 [755]	1200 [566]	2000 [944]	2000 [944]	2000 [944]
Temperature Rise Range °F [°C]	220V	20-50 [11-28]	35-65 [19.5-36.1]	25-55 [14-31]	45-75 [25-42]	30-60 [16.5-33.5]	35-65 [19.5-36.1]	50-80 [28-44.5]
	240V	15-45 [8.3-25]	30-60 [16.5-33.5]	20-50 [11-28]	40-70 [22.2-39]	25-55 [14-31]	35-65 [19.5-36.1]	45-75 [25-42]
Max. Outlet Air Temp. °F [°C]		155 [68.3]	165 [73.8]	155 [68.3]	190 [87.7]	170 [76.6]	180 [82.2]	190 [87.7]
Fuel Efficiency (Thermal)		82.0%	82.4%	82.3%	81.6%	81.2%	81.5%	81.2%
Standard Filter Size (In.) [mm]		15 ³ / ₄ x 25 [400 x 635]	15 ³ / ₄ x 25 [400 x 635]	15 ³ / ₄ x 25 [400 x 635]	15 ³ / ₄ x 25 [400 x 635]	19 ¹ / ₄ x 25 [489 x 635]	22 ³ / ₄ x 25 [578 x 635]	22 ³ / ₄ x 25 [578 x 635]
Approx. Shipping Weight (Lbs.) [Kg]		85 [39]	105 [48]	105 [48]	115 [52]	120 [54]	140 [63]	150 [68]
Return Air Cabinet		C14B	C17B	C17B	C17B	C21B	C24B	C24B

MODEL IDENTIFICATION

S	G	P	N	—	04E	A	U	E	Y
Rheem International	Gas Furnace	Airflow P = Upflow/ Horizontal	Design Series		Heating Input Designation 04E = Direct Spark Ignition 45,000 BTUH 06E = Direct Spark Ignition 67,500 BTUH 09E = Direct Spark Ignition 90,000 BTUH 11E = Direct Spark Ignition 112,500 BTUH 13E = Direct Spark Ignition 135,000 BTUH	Variations A = Std. Cabinet B = Wide Cabinet	Blower Designation U = 11 x 6 M = 11 x 7 R = 11 x 10	Heating & Cooling Designation E = 1100-1300 CFM G = 1500-1700 CFM J = 1900-2100 CFM	Fuel Type Y = Natural Gas 50 Hz International

[] Designates Metric Conversions

UPFLOW DIMENSIONS



UPFLOW DIMENSIONS AND CLEARANCE TO COMBUSTIBLE MATERIAL (INCHES) [mm]

MODEL SGPN-	A	B	C	D	E	F	REDUCED CLEARANCES (IN.) [mm]						
							LEFT SIDE	RIGHT SIDE	BACK	TOP	FRONT	VENT	SHIP. WGTs. (LBS.) [kg]
04	14 [356]	12 ²⁷ / ₃₂ [326]	10 ⁵ / ₈ [270]	Ⓢ	11 ¹ / ₂ [292]	1 ⁷ / ₈ [48]	0	4 [102] ②	0	1 [25]	3 [76]	6 [152] ③	85 [38.6]
06	17 ¹ / ₂ [445]	16 ¹¹ / ₃₂ [415]	12 ³ / ₈ [314]	Ⓢ	15 [381]	2 ¹ / ₂ [64]	0	3 [76] ②	0	1 [25]	3 [76]	6 [152] ③	105 [47.6]
09 (A)	17 ¹ / ₂ [445]	16 ¹¹ / ₃₂ [415]	12 ³ / ₈ [314]	Ⓢ	15 [381]	2 ¹ / ₂ [64]	0	3 [76] ②	0	1 [25]	3 [76]	6 [152] ③	115 [52.2]
09 (B)	21 [533]	19 ²⁷ / ₃₂ [504]	14 ¹ / ₈ [359]	Ⓢ	18 ¹ / ₂ [470]	2 ¹ / ₂ [64]	0	0	0	1 [25]	3 [76]	6 [152] ③	120 [54.4]
11	24 ¹ / ₂ [622]	23 ¹¹ / ₃₂ [593]	15 ⁷ / ₈ [403]	Ⓢ	22 [559]	2 ¹ / ₂ [64]	0	0	0	1 [25]	3 [76]	6 [152] ③	140 [63.5]
13	24 ¹ / ₂ [622]	23 ¹¹ / ₃₂ [593]	15 ⁷ / ₈ [403]	Ⓢ	22 [559]	2 ¹ / ₂ [64]	0	0	0	1 [25]	3 [76]	6 [152] ③	150 [68]

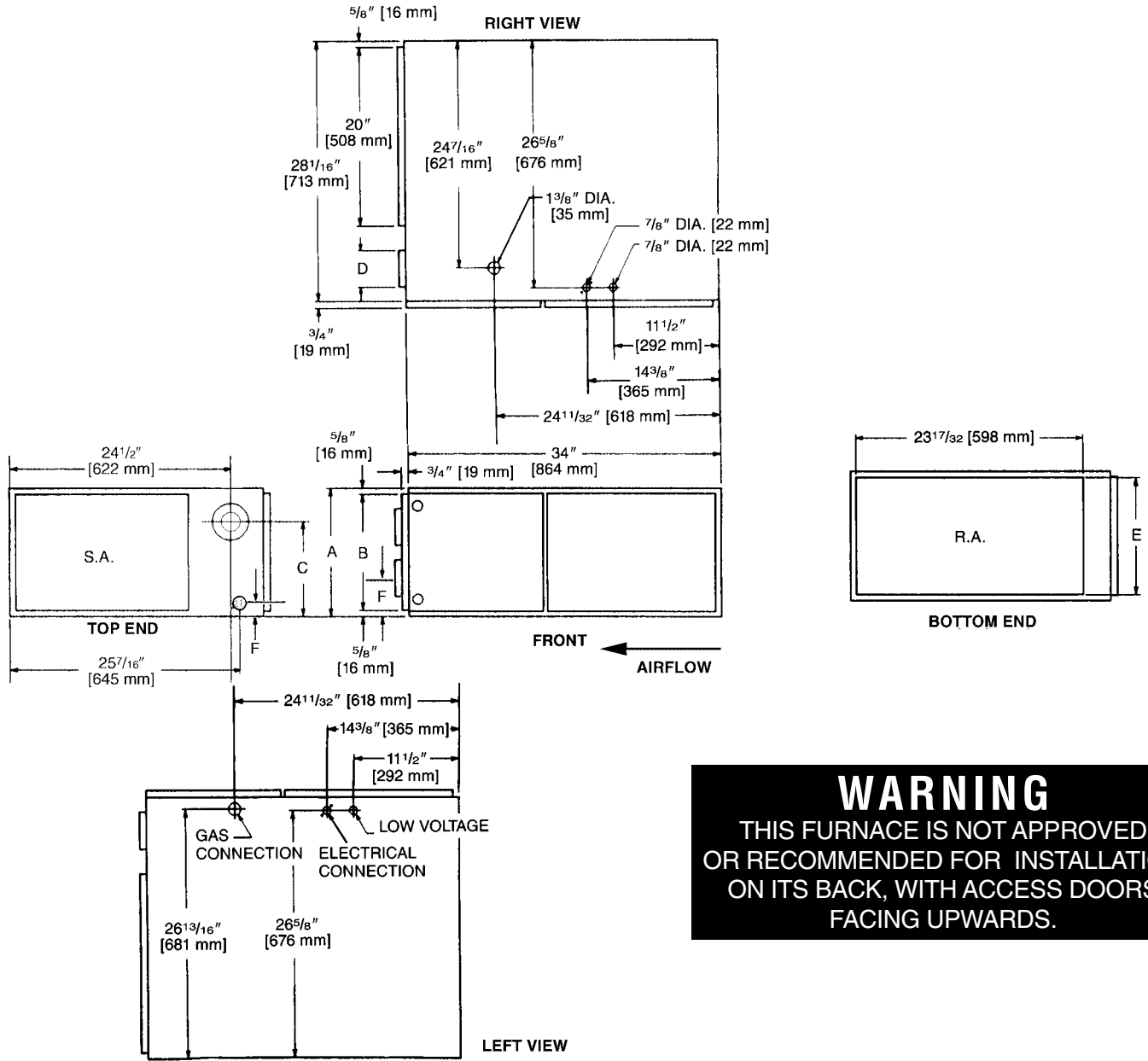
NOTES: ① May require a 3" [76 mm] to 4" [102 mm] or 3" [76 mm] to 5" [127 mm] adapter.

② May be 0" [0 mm] with type B vent.

③ May be 1" [25 mm] with type B vent.

[] Designates Metric Conversions

HORIZONTAL DIMENSIONS



WARNING
 THIS FURNACE IS NOT APPROVED OR RECOMMENDED FOR INSTALLATION ON ITS BACK, WITH ACCESS DOORS FACING UPWARDS.

HORIZONTAL DIMENSIONS AND CLEARANCE TO COMBUSTIBLE MATERIAL (INCHES) [mm]

MODEL SGPN-	A	B	C	D	E	F	REDUCED CLEARANCES (IN.) [mm]						
							LEFT SIDE	RIGHT SIDE	BACK	TOP	FRONT	VENT	SHIP. WGTs. (LBS.) [kg]
04	14 [356]	12 27/32 [326]	10 5/8 [270]	Ⓚ	11 1/2 [292]	1 7/8 [48]	0	4 [102] ②	0	1 [25]	3 [76]	6 [152] ③	85 [38.6]
06	17 1/2 [445]	16 11/32 [415]	12 3/8 [314]	Ⓚ	15 [381]	2 1/2 [64]	0	3 [76] ②	0	1 [25]	3 [76]	6 [152] ③	105 [47.6]
09 (A)	17 1/2 [445]	16 11/32 [415]	12 3/8 [314]	Ⓚ	15 [381]	2 1/2 [64]	0	3 [76] ②	0	1 [25]	3 [76]	6 [152] ③	115 [52.2]
09 (B)	21 [533]	19 27/32 [504]	14 1/8 [359]	Ⓚ	18 1/2 [470]	2 1/2 [64]	0	0	0	1 [25]	3 [76]	6 [152] ③	120 [54.4]
11	24 1/2 [622]	23 11/32 [593]	15 7/8 [403]	Ⓚ	22 [559]	2 1/2 [64]	0	0	0	1 [25]	3 [76]	6 [152] ③	140 [63.5]
13	24 1/2 [622]	23 11/32 [593]	15 7/8 [403]	Ⓚ	22 [559]	2 1/2 [64]	0	0	0	1 [25]	3 [76]	6 [152] ③	150 [68]

NOTES: ① May require a 3" [76 mm] to 4" [102 mm] or 3" [76 mm] to 5" [127 mm] adapter.

② May be 0" [0 mm] with type B vent.

③ May be 1" [25 mm] with type B vent.

[] Designates Metric Conversions

ACCESSORIES—UPFLOW

EXTERNAL BOTTOM FILTER RACK: RXGF-CB

FILTER RACK FILTER SIZES† INCHES [mm]	
MODEL SGPN-	RXGF-CA (SIDE)
04, 06, 09*A	15 ³ / ₄ x 25 [400 x 635]
09*BRJ	15 ³ / ₄ x 25 [400 x 635]
11, 13	15 ³ / ₄ x 25 [400 x 635]

† Filter racks are shipped without filters.

Filters shipped with furnace may be used or a suitable 1" [25.4 mm] filter.

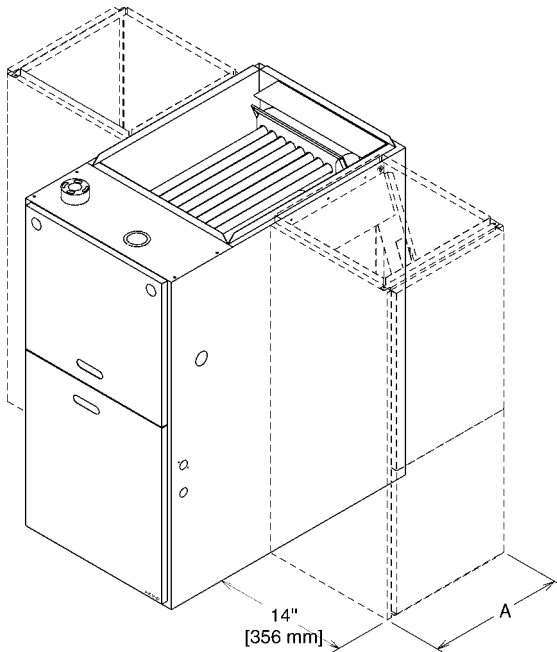
*Designates "E" or "N".

RXPF-F01 and F02

FOSSIL FUEL KITS are for use with Rheem Classic Heat Pumps and Super Quiet 80 warm air furnaces. The RXPF-F02 meets TVA requirements.

ACCESSORY RETURN AIR CABINETS

Return Air Cabinets may be installed on either side application except RXGR-C24B (side application must be on side opposite gas and electrical connections).



THE RXGR-C24B MUST ONLY BE INSTALLED ON THE SIDE OPPOSITE THE GAS AND ELECTRICAL CONNECTIONS.

RETURN AIR CABINETS	A IN. [mm]	FILTER SIZE IN. [mm]
RXGR-C14B	14 [356]	(2) 12 x 16 [305 x 406]
RXGR-C17B	17 ¹ / ₂ [445]	(2) 12 x 16 [305 x 406]
RXGR-C21B	21 [533]	(2) 20 x 16 [508 x 406]
RXGR-C24B	24 ¹ / ₂ [622]	(2) 24 x 16 [610 x 406]

WARNING: IMPORTANT NOTICE

A SOLID METAL BASE PLATE (SEE TABLE) MUST BE IN PLACE WHEN THE FURNACE IS INSTALLED WITH SIDE AIR RETURN DUCTS. FAILURE TO INSTALL A BASE PLATE COULD CAUSE PRODUCTS OF COMBUSTION TO BE CIRCULATED INTO THE LIVING SPACE AND CREATE POTENTIALLY HAZARDOUS CONDITIONS.

FURNACE WIDTH IN. [mm]	SOLID BOTTOM KIT NO.	BASE PLATE NO.	BASE PLATE SIZE IN. [mm]
14 [356]	RXGB-D14	AE-61874-01	11 ⁵ / ₈ x 23 ⁹ / ₁₆ [295 x 598]
17 ¹ / ₂ [445]	RXGB-D17	AE-61874-02	15 ¹ / ₈ x 23 ⁹ / ₁₆ [384 x 598]
21 [533]	RXGB-D21	AE-61874-03	18 ⁵ / ₈ x 23 ⁹ / ₁₆ [473 x 598]
24 ¹ / ₂ [622]	RXGB-D24	AE-61874-04	25 ⁵ / ₈ x 23 ⁹ / ₁₆ [651 x 598]

FOR HIGH ALTITUDES:

80+ HIGH ALTITUDE INSTRUCTIONS

CAUTION: Always follow National Fuel Gas Code (NFPA) guidelines when converting for high altitudes.

High altitude option codes are not required for these models. However, the burner orifice size needs to be recalculated and verified at elevations above 2000 ft. See Installation Instructions for more information.

UNIT LABEL KIT:

Rheem *Label* – RXMG-AR

Each kit contains a quantity of 100 nameplates.

[] Designates Metric Conversions

BLOWER PERFORMANCE DATA

220V

MODEL NUMBER SGPN-SERIES	BLOWER SIZE [mm]	MOTOR H.P. [W]	BLOWER SPEED TAP @ 220V	CFM [L/s] AIR DELIVERY TESTED WITH FILTER EXTERNAL STATIC PRESSURE INCHES [kPa] WATER COLUMN						
				.1 [.02]	.2 [.05]	.3 [.07]	.4 [.10]	.5 [.12]	.6 [.15]	.7 [.17]
04EAUEY	11 x 6 [279 x 152]	1/2 [373]	LOW	982 [463]	951 [449]	920 [434]	883 [399]	845 [399]	811 [383]	776 [366]
			MED	1137 [637]	1108 [522]	1075 [507]	1045 [493]	1015 [479]	979 [462]	943 [445]
			HIGH	1347 [636]	1316 [621]	1266 [606]	1254 [592]	1221 [576]	1164 [559]	1146 [541]
06EAMEY	11 x 7 [279 x 178]	1/2 [373]	LOW	1014 [479]	985 [455]	915 [432]	877 [414]	838 [395]	793 [374]	747 [353]
			MED	1176 [555]	1132 [534]	1088 [513]	1038 [490]	987 [466]	942 [445]	897 [423]
			HIGH	1408 [664]	1360 [642]	1312 [619]	1271 [600]	1230 [580]	1178 [556]	1125 [531]
06EAMGY	11 x 7 [279 x 178]	3/4 [559]	LOW	1358 [641]	1326 [626]	1293 [610]	1246 [588]	1198 [565]	1209 [571]	1120 [529]
			MED	1542 [728]	1499 [707]	1456 [697]	1419 [670]	1381 [652]	1333 [629]	1284 [606]
			HIGH	1908 [900]	1854 [875]	1799 [649]	1752 [827]	1704 [804]	1659 [763]	1614 [762]
09EAMEY	11 x 7 [279 x 178]	1/2 [373]	LOW	978 [462]	913 [413]	848 [400]	795 [375]	741 [350]	655 [309]	588 [288]
			MED	1154 [545]	1101 [520]	1048 [495]	981 [463]	913 [431]	846 [399]	778 [367]
			HIGH	1377 [650]	1320 [623]	1263 [598]	1199 [566]	1134 [535]	1067 [504]	999 [471]
09EBRJY	11 x 10 [279 x 254]	3/4 [559]	LOW	1499 [707]	1467 [892]	1434 [677]	1395 [658]	1356 [640]	1309 [618]	1281 [595]
			MED	1719 [611]	1679 [792]	1639 [773]	1602 [756]	1565 [739]	1524 [719]	1483 [700]
			HIGH	2148 [1014]	2107 [994]	2065 [975]	2029 [958]	1993 [941]	1948 [918]	1898 [896]
11EARJY	11 x 10 [279 x 254]	3/4 [559]	LOW	1544 [733]	1519 [717]	1483 [700]	1435 [677]	1386 [654]	1341 [633]	1295 [611]
			MED	1756 [829]	1718 [811]	1679 [792]	1639 [773]	1599 [755]	1547 [730]	1494 [705]
			HIGH	2209 [1042]	2145 [1012]	2080 [982]	2044 [965]	2008 [848]	1964 [927]	1920 [908]
13EARJY	11 x 10 [279 x 254]	3/4 [559]	LOW	1556 [734]	1516 [715]	1475 [698]	1438 [679]	1400 [661]	1350 [637]	1299 [613]
			MED	1747 [824]	1713 [808]	1679 [792]	1548 [778]	1616 [763]	1568 [740]	1519 [717]
			HIGH	2232 [1053]	2171 [1025]	2110 [995]	2062 [973]	2014 [950]	1969 [929]	1923 [908]

240V

MODEL NUMBER SGPN-SERIES	BLOWER SIZE [mm]	MOTOR H.P. [W]	BLOWER SPEED TAP @ 240V	CFM [L/s] AIR DELIVERY TESTED WITH FILTER EXTERNAL STATIC PRESSURE INCHES [kPa] WATER COLUMN						
				.1 [.02]	.2 [.05]	.3 [.07]	.4 [.10]	.5 [.12]	.6 [.15]	.7 [.17]
04EAUEY	11 x 6 [279 x 152]	1/2 [373]	LOW	1097 [518]	1065 [503]	1032 [487]	1000 [472]	968 [457]	926 [437]	882 [416]
			MED	1235 [583]	1204 [568]	1174 [554]	1141 [538]	1107 [522]	1072 [506]	1037 [489]
			HIGH	1448 [683]	1420 [670]	1392 [657]	1358 [641]	1324 [625]	1267 [607]	1249 [589]
06EAMEY	11 x 7 [279 x 178]	1/2 [373]	LOW	1112 [525]	1076 [508]	1039 [490]	994 [469]	949 [448]	893 [421]	836 [395]
			MED	1262 [605]	1247 [588]	1212 [572]	1164 [549]	1115 [526]	1063 [502]	1011 [477]
			HIGH	1524 [719]	1483 [700]	1442 [651]	1399 [660]	1356 [640]	1309 [618]	1261 [595]
06EAMGY	11 x 7 [279 x 178]	3/4 [559]	LOW	1520 [717]	1479 [698]	1437 [678]	1399 [659]	1355 [639]	1309 [618]	1262 [596]
			MED	1707 [606]	1668 [787]	1629 [769]	1587 [749]	1544 [729]	1495 [708]	1448 [682]
			HIGH	2046 [966]	1999 [943]	1952 [921]	1900 [697]	1847 [872]	1798 [849]	1748 [825]
09EAMEY	11 x 7 [279 x 178]	1/2 [373]	LOW	1069 [604]	1019 [461]	969 [457]	907 [428]	766 [361]	766 [361]	687 [324]
			MED	1262 [591]	1197 [565]	1141 [538]	1089 [504]	927 [437]	927 [437]	858 [404]
			HIGH	1478 [698]	1429 [674]	1379 [661]	1308 [617]	1167 [651]	1167 [551]	1096 [517]
09EBRJY	11 x 10 [279 x 254]	3/4 [559]	LOW	1716 [810]	1693 [794]	1649 [778]	1607 [758]	1564 [739]	1617 [716]	1470 [694]
			MED	1905 [899]	1869 [862]	1833 [865]	1794 [847]	1755 [626]	1712 [808]	1669 [788]
			HIGH	2347 [1108]	2308 [1069]	2269 [1071]	2227 [1051]	2184 [1031]	2130 [1005]	2075 [979]
11EARJY	11 x 10 [279 x 254]	3/4 [559]	LOW	1726 [815]	1690 [798]	1854 [781]	1610 [760]	1565 [739]	1518 [716]	1471 [694]
			MED	1939 [915]	1901 [697]	1862 [879]	1827 [862]	1791 [845]	1743 [823]	1694 [799]
			HIGH	2380 [1123]	2349 [1109]	2317 [1093]	2272 [1072]	2227 [1051]	2183 [1030]	2138 [1009]
13EARJY	11 x 10 [279 x 254]	3/4 [559]	LOW	1710 [807]	1675 [790]	1640 [774]	1600 [755]	1559 [736]	1513 [714]	1457 [692]
			MED	1944 [917]	1904 [899]	1864 [880]	1821 [859]	1778 [839]	1743 [823]	1707 [606]
			HIGH	2414 [1139]	2366 [1117]	2317 [1093]	2273 [1073]	2228 [1051]	2181 [1029]	2133 [1007]

[] Designates Metric Conversions

Before proceeding with installation, refer to installation instructions packaged with each model, as well as complying with all Federal, State, Provincial, and Local codes, regulations, and practices.

**RHEEM
AIR CONDITIONING
DIVISION**

5600 Old Greenwood Road, Fort Smith, Arkansas 72908



"In keeping with its policy of continuous progress and product improvement, Rheem reserves the right to make changes without notice."